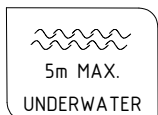
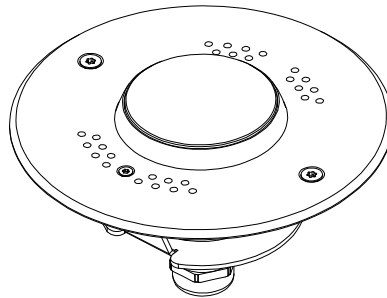


# ARPOOL IRIS EFECTA

## INSTALLATION INSTRUCTIONS (FIXTURE)



12 VDC



IP68

AISI316L

Ta | 40°C

IK10



NO PRESSURE  
WASH



ALL DIMENSIONS ARE GIVEN ACCORDING TO THE SI SYSTEM OF UNITS (MM, KG, °C), ADDITIONAL DIMENSIONS THAT ARE WRITTEN IN BRACKETS, ARE GIVEN ACCORDING TO THE U.S. MEASUREMENT SYSTEM (IN, LBS, °F)

## GENERAL REMARKS ON SAFETY

- READ ALL OF THESE INSTRUCTIONS BEFORE INSTALLING THE HOUSING.
- KEEP ALL OF THE INSTRUCTIONS FOR FUTURE REFERENCE.
- INSTALLATION IS TO BE PERFORMED BY A QUALIFIED CONTRACTOR.
- ALL INSTALLATIONS ARE TO CONFORM TO THE STANDARDS OF THE NATIONAL ELECTRICAL CODE AS WELL AS ALL LOCAL JURISDICTIONAL CODES AND REGULATIONS.
- THE MANUFACTURER ACCEPTS NO RESPONSIBILITY FOR DAMAGE TO PERSONS OR PROPERTY ARISING THROUGH IMPROPER USE OR INSTALLATION.
- HOUSINGS' SURFACES EXPOSED TO THE EFFECTS OF WATER (INCLUDING WATER CONTAINING CHLORINE) ARE MADE OUT OF AISI316L STAINLESS STEEL. AISI316L IS SUITABLE FOR THIS USE AND WILL PREVENT CORROSION UP TO LEVEL OF 1000 PPM OF CHLORINE IN WATER AND UP TO WATER pH LEVEL OF 7.
- FOR WARRANTY CONDITIONS PLEASE CONSULT LOCAL SALES REPRESENTATIVE

## WIRING

### WIRE MARKINGS

#### OPTION WITH SINGLE LED COLOR

- + BLACK WIRE
- WHITE WIRE

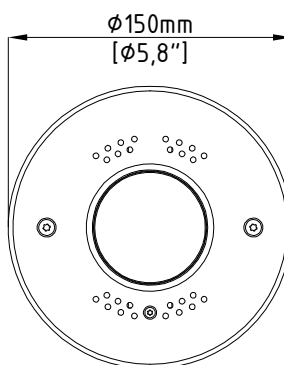
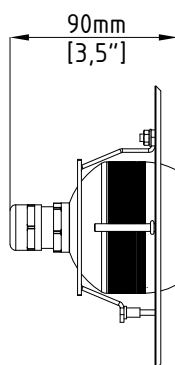
#### OPTION WITH RGBW LED COLOR

- + BLACK WIRE
- R RED WIRE
- G GREEN WIRE
- B ORANGE WIRE
- W WHITE WIRE

### NOTE:

IT ADVISED THAT CABLE LENGTH IS LONG ENOUGH THAT IT REACHES DRY AREA FOR SPLICE CONNECTION. CONTROL GEAR USED TO POWER THIS LUMINAIRE SHALL BE SELV TYPE; HIGHEST ALLOWED  $U_{out}$  TO BE MAX 10% OF THE NOMINAL VOLTAGE OF CONTROL GEAR; MAXIMUM ALLOWED WIRING DISTANCE BETWEEN CONTROL GEAR AND LUMINAIRE WITH STANDARD SUPPLIED CABLE IS 20 m OR 66'. INSTALLATION OF LONGER WIRING LENGTHS SHOULD BE DISCUSSED WITH MANUFACTURER PRIOR THE FIXTURE ORDERING. WHERE LUMINAIRE IS DELIVERED WITH CONNECTING LEADS AND WITHOUT A MEANS OF CONNECTION TO THE POWER SUPPLY TERMINAL BLOCKS MAY BE USED (TERMINAL BLOCKS SUPPLIED BY MANUFACTURER). IF TERMINAL BLOCKS ARE LOST, THEY SHALL BE REPLACED FOR THE SAME IP RATING AS THE LUMINAIRE ITSELF (LOSS OF TERMINAL BLOCKS IS NOT COVERED BY WARRANTY CLAIM), WITH RATED VOLTAGE OF MIN. 400 V AND RATED CONNECTION CAPACITY OF 10A. WIRE ENDS COMING FROM POWER SUPPLY TO BE PREPARED AS TERMINAL BLOCK MANUFACTURER RECOMMENDS. TERMINAL BLOCK SHOULD BE PLACED IN A LOCATION WHERE IT DOESN'T NOT AFFECT THE LUMINAIRE OPERATION.

## FIXTURE DIMENSIONS



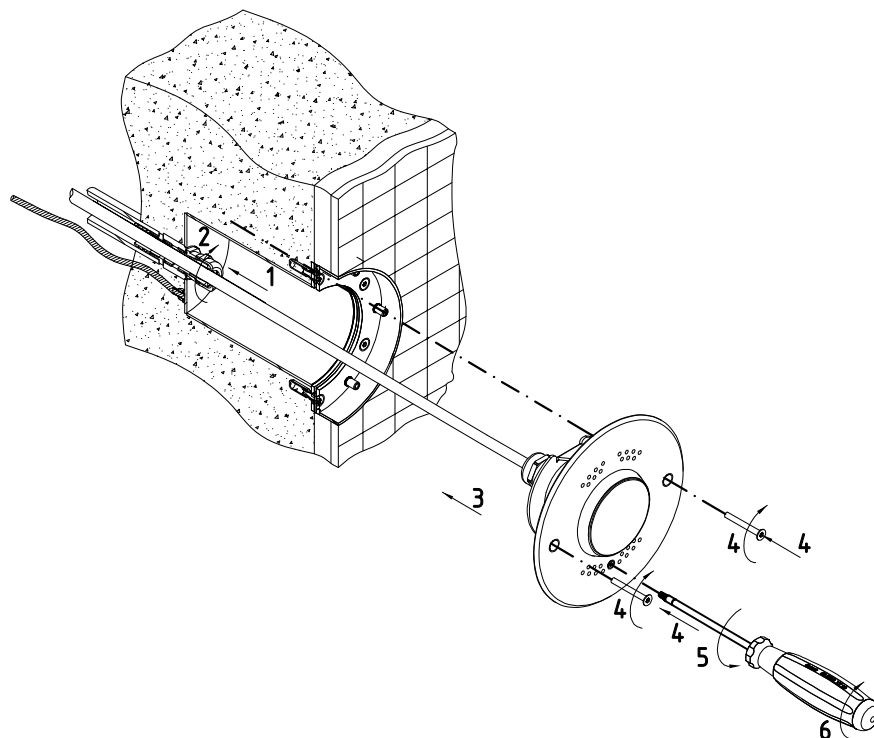
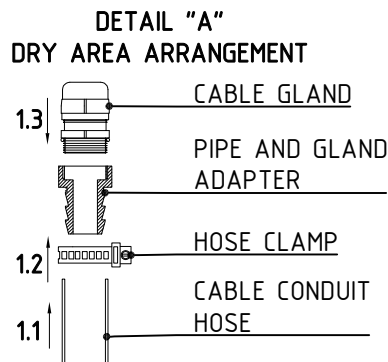
# INSTALLATION GUIDE

## CONCRETE POOL FIXTURE

1. ROUTE THE FEED CABLE THROUGH THE HOUSING CABLE GLAND AND CONDUIT HOSE TO THE SPLICE CONNECTION AREA (IT IS ADVISED THAT AREA WHERE SPLICE CONNECTION IS MADE IS DRY AND SUITABLE FOR ELECTRICAL CONNECTIONS, SHOWN IN DETAIL "A")
2. TIGHTEN CABLE GLAND IN INSTALLATION HOUSING AFTER CABLE HAS BEEN ROUTED THROUGH
3. PLACE THE FIXTURE IN THE INSTALLATION HOUSING
4. FIX THE FIXTURE TO THE INSTALLATION HOUSING WITH SCREWS (SCREW TYPE ISO 14581, SCREW SIZE IS M4x35 A4/MARINE GRADE; HEXALOBULAR T20 STAINLESS STEEL SCREWDRIVER TO BE USED)
5. ADJUST ANGLE OF EACH INDIVIDUAL FIXTURE BY LOOSENING THE SCREW LOCATED ON FIXTURE FLANGE
6. WITH ANGLE ADJUSTED FASTEN THE SCREWS UNTIL TIGHT (SCREWS SUPPLIED BY MANUFACTURER, SCREW TYPE ISO14581 - M3x16 A4/MARINE GRADE, HEXALOBULAR T10 STAINLESS STEEL SCREWDRIVER TO BE USED)

### DRY AREA

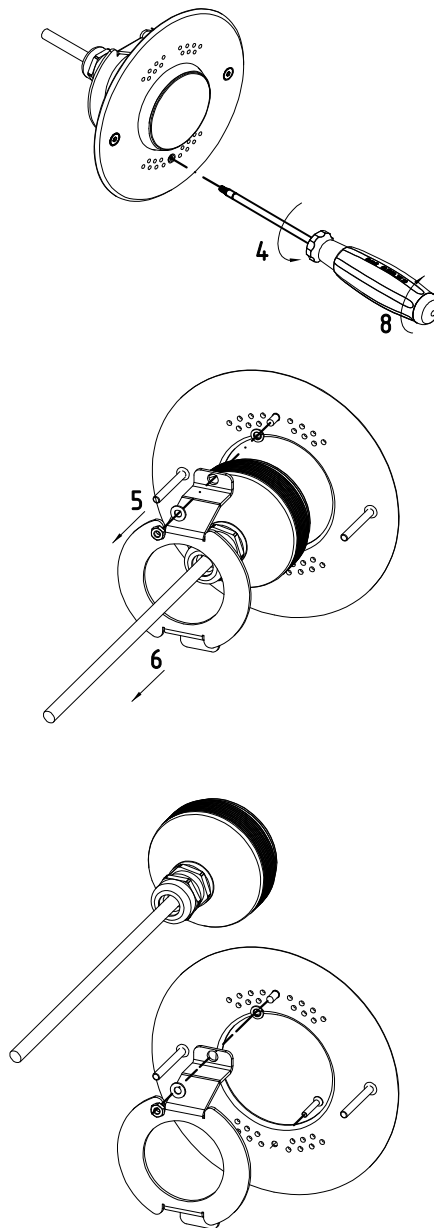
- 1.1 CONNECT CABLE CONDUIT HOSE TO THE GLAND ADAPTER
- 1.2 MOUNT AND FASTEN HOSE CLAMP (SUPPLIED BY MANUFACTURER).
- 1.3 MOUNT CABLE GLAND ON TO GLAND ADAPTER



1. BEFORE ENGINE REPLACEMENT IT IS NECESSARY TO LOWER THE LEVEL OF WATER, CABLE GLAND MUST BE IN THE DRY AREA.
2. REMOVE THE FIXTURE FROM THE INSTALLATION HOUSING BY REMOVING THE SCREWS AS PER STEP 4 IN INSTALLATION GUIDE SECTION (SCREW TYPE ISO 14581, SCREW SIZE IS M4x35 A4/MARINE GRADE; HEXALOBULAR T20 STAINLESS STEEL SCREWDRIVER TO BE USED)
3. REMOVE THE FIXTURE FROM THE HOUSING AND LOOSEN THE CABLE GLAND IN INSTALLATION HOUSING
4. LOOSEN THE SCREW LOCATED ON FLANGE UNTIL IT COMES OUT OF STUD NUT (SCREW TYPE ISO14581 - M3x16 A4/MARINE GRADE, HEXALOBULAR T10 STAINLESS STEEL SCREWDRIVER TO BE USED)
5. REMOVE THE NUT AND WASHER FROM STUD BOLT (#5,5 STAINLESS STEEL WRENCH TO BE USED)
6. REMOVE THE ADAPTER BRACKET (SAVE THE NUTS AND WASHERS FOR LATER USE)
7. REPLACE THE ENGINE
8. MOUNT THE ADAPTER BRACKET AND FASTEN NUTS AND SCREWS THAT WERE REMOVED
9. REPEAT ALL STEPS FROM THE INSTALLATION PROCESS

**IMPORTANT SUGGESTION:**

IT IS ADVISED TO CLEAN INSTALLATION HOUSING AND FIXTURE PARTS AFTER REPLACEMENT TO EXTEND THE LIFETIME OF EVERY ELEMENT IN THE ASSEMBLY.



**IMPORTANT NOTE:**

FOR DISPOSAL OF REPLACED LED MODULE PLEASE CONTACT YOUR FILIX SALES REPRESENTATIVE.